

CHRISTMAS TREE POP-UP CARD

Page 1 of 4

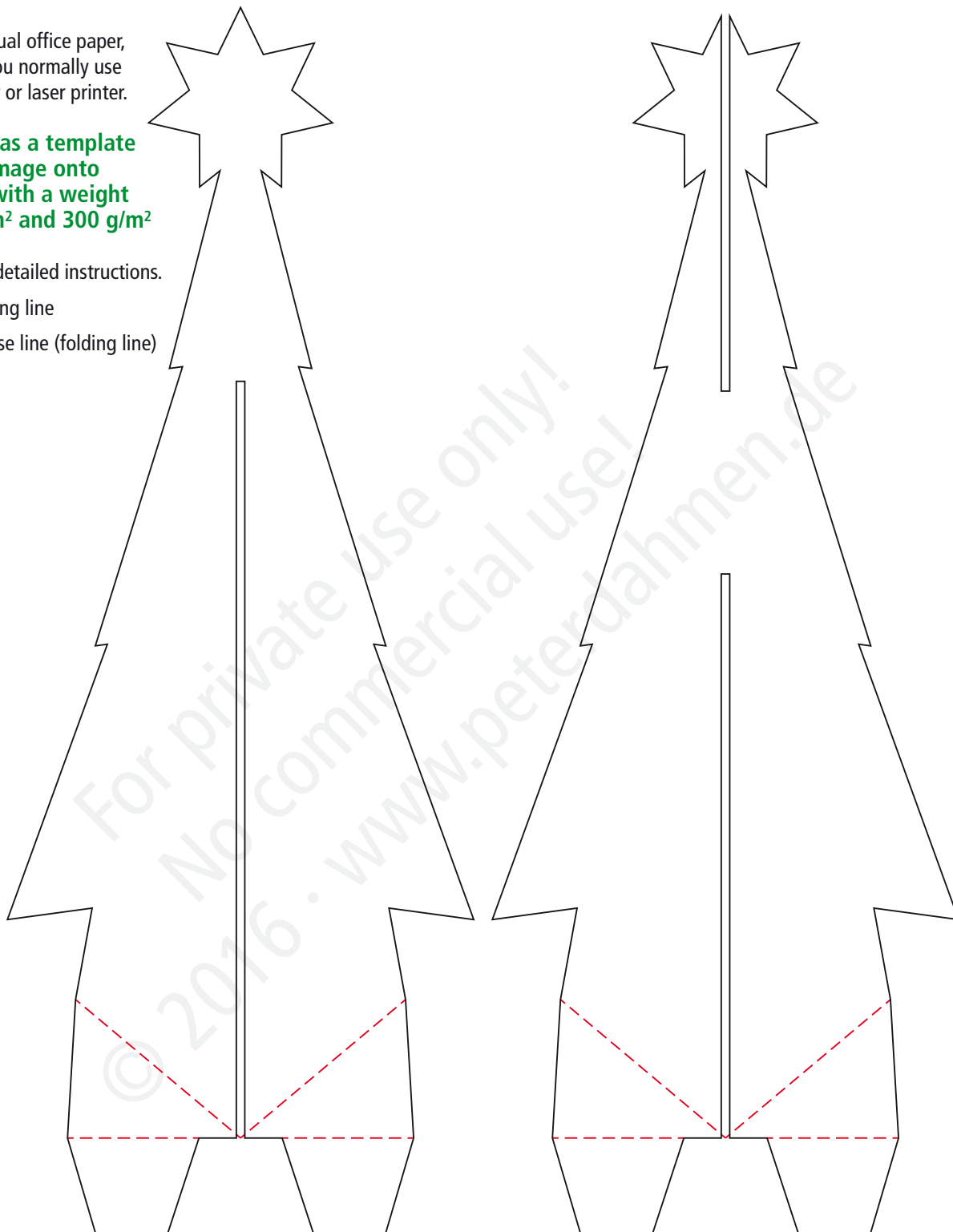
Print this page on usual office paper, e.g. the paper that you normally use on your inkjet printer or laser printer.

Use the printout as a template to transfer this image onto light cardboard with a weight between 200 g/m² and 300 g/m²

Watch the video for detailed instructions.

————— cutting line

- - - - - crease line (folding line)



CHRISTMAS TREE POP-UP CARD

Page 2 of 4

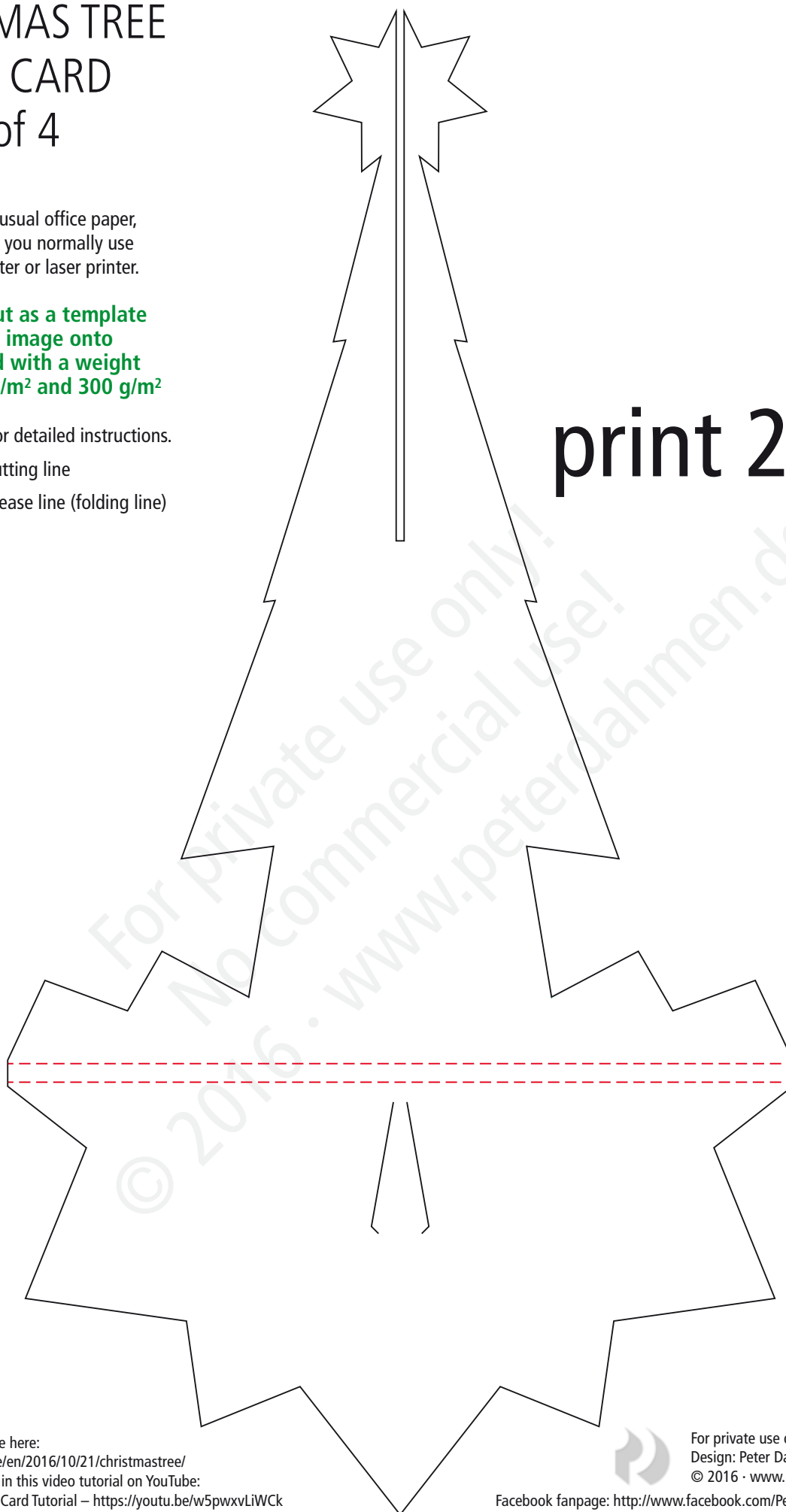
Print this page on usual office paper,
e.g. the paper that you normally use
on your inkjet printer or laser printer.

Use the printout as a template
to transfer this image onto
light cardboard with a weight
between 200 g/m² and 300 g/m²

Watch the video for detailed instructions.

————— cutting line
- - - - - crease line (folding line)

print 2x



Download this template here:
<https://peterdahmen.de/en/2016/10/21/christmastree/>
Follow the instructions in this video tutorial on YouTube:
Christmas Tree Pop-Up Card Tutorial – <https://youtu.be/w5pwxvLiWck>



For private use only! No commercial use!
Design: Peter Dahmen
© 2016 · www.peterdahmen.de

Facebook fanpage: <http://www.facebook.com/Peter.Dahmen.Papierdesign>

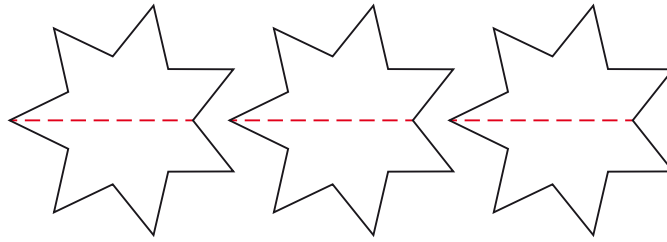
CHRISTMAS TREE POP-UP CARD

Page 3 of 4

Print this page on usual office paper,
e.g. the paper that you normally use
on your inkjet printer or laser printer.

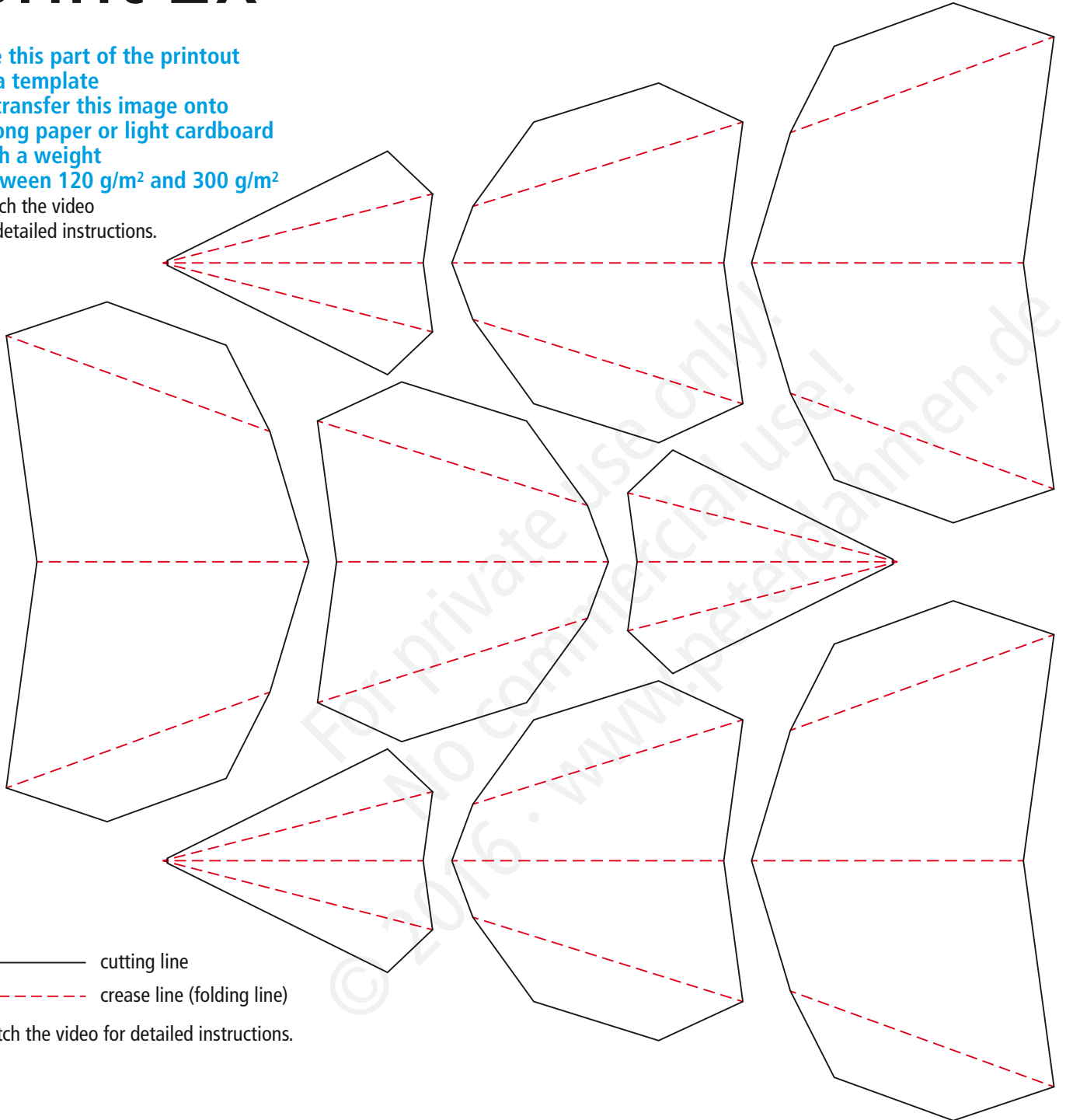
Watch the video for detailed instructions.

Use this part of the printout
as a template
to transfer this image onto
light paper or foil with a weight
between 80 g/m² and 200 g/m²



print 2x

Use this part of the printout
as a template
to transfer this image onto
strong paper or light cardboard
with a weight
between 120 g/m² and 300 g/m²
Watch the video
for detailed instructions.



— cutting line
- - - crease line (folding line)

Watch the video for detailed instructions.

Download this template here:
<https://peterdahmen.de/en/2016/10/21/christmastree/>
Follow the instructions in this video tutorial on YouTube:
Christmas Tree Pop-Up Card Tutorial – <https://youtu.be/w5pwxLiWck>



For private use only! No commercial use!
Design: Peter Dahmen
© 2016 · www.peterdahmen.de

Facebook fanpage: <http://www.facebook.com/Peter.Dahmen.Papierdesign>

CHRISTMAS TREE

POP-UP CARD

Page 4 of 4

Print this page on usual office paper,
e.g. the paper that you normally use
on your inkjet printer or laser printer.

print 2x

**Use this printout as a template
to transfer this image onto
stiff cardboard
with a weight of 450 g/m² or more**

Watch the video for detailed instructions.

138 x 196 mm

For private use only!
No commercial use!
© 2016 · www.peterdahmen.de

————— cutting line

Download this template here:
<https://peterdahmen.de/en/2016/10/21/christmastree/>
Follow the instructions in this video tutorial on YouTube:
Christmas Tree Pop-Up Card Tutorial – <https://youtu.be/w5pwxLiWck>



For private use only! No commercial use!
Design: Peter Dahmen
© 2016 · www.peterdahmen.de

Facebook fanpage: <http://www.facebook.com/Peter.Dahmen.Papierdesign>